

# BACK YARD

SCHÖNES.NEUES.WEDDING

91 MODERN CONDOMINIUMS IN BERLIN-WEDDING



**bpd**

bouwfonds immobilienentwicklung



## The surroundings



### Surrounded by greenery

Anyone who loves nature will feel at home in Wedding. Take a leisurely stroll along the Panke and enjoy a relaxing afternoon in the fresh air, perhaps culminating your stroll at the historic Humboldthain Park. In summer, the nearby Plötzensee Lido invites you to swim and splash around.

### Experience culture

There is a lot to discover around Pankstraße for those interested in art and culture. The Silent Green cultural quarter offers guests a varied music and art programme. A piano recital at the Piano Salon Christophori or contemporary dance at the Uferstudios promise extraordinary experiences. In many corners, you will find small but light-flooded studios of artists who exhibit their works here.



Extensive water and green spaces make Wedding particularly liveable.

# LIVING IN THE MOST DIVERSE PART OF THE CITY

Wedding has developed into one of Berlin's most popular neighbourhoods. The lively neighbourhood around Pankstraße is home to many culinary, cultural and scenic gems. Cosy restaurants, charming cafés and trendy bars invite you to linger and small shops invite you to browse.

With its numerous daycare centres, schools and university facilities, Wedding offers both families and students an ideal living environment. Having everything close by makes life in the neighbourhood particularly convenient: There are several supermarkets within walking distance as well as suburban railway and underground stations. In addition, the nearby Berlin Gesundbrunnen railway station offers connections to local and long-distance transport.



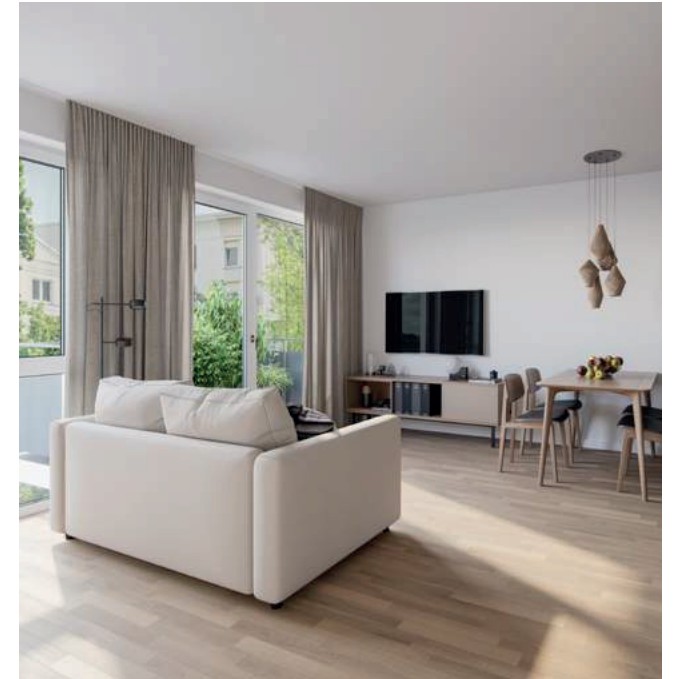




## Project highlights

# BACKYARD: THE PROJECT AT A GLANCE

- Sheltered, green inner courtyard and outdoor areas with play and quiet zones
- All flats with terrace, balcony or roof terrace
- Solar power contracting
- Cellar storage rooms for each flat
- Package pick-up station for residents
- Plenty of bicycle parking spaces in the courtyard and the basement
- Also ideal as a capital investment





## Living space for all needs



### Modern architecture for maximum quality of life

The new building blends into the inner courtyard of an ensemble of buildings with a total of 91 flats. The 1- to 4-room flats with areas between approx. 23 m<sup>2</sup> and approx. 112 m<sup>2</sup> boast efficient floor plans and are easily accessible by lift. While singles and couples will find a new home in the numerous 1- and 2-room flats, the 3- to 4-room flats are particularly attractive for young families looking for living space in a central location. The terraces or balconies further enhance the quality of the flats.

### Green prospects

The building is surrounded by a green inner courtyard and an outdoor area. The open spaces offer plenty of space for neighbourly get-togethers. Children can let off steam in the lovingly designed playgrounds. Sufficient bicycle parking spaces in the building and in the courtyard enable sustainable mobility in the city.

### Solar energy contracting

The roof surfaces of the new building will be equipped with a solar system in accordance with the Berlin Solar Law. The contracting model enables owners to benefit from solar energy without having to invest themselves by having specialised service providers take care of the planning, financing, installation and maintenance of the solar power systems.



# HIGH-QUALITY FURNISHINGS WITH STYLE

## Enjoy elegant living spaces

The living areas of the flats are fitted with real wood parquet. Underfloor heating creates a cosy and healthy indoor climate. Selected design elements and sanitaryware from renowned manufacturers turn the bathrooms into oases of well-being.

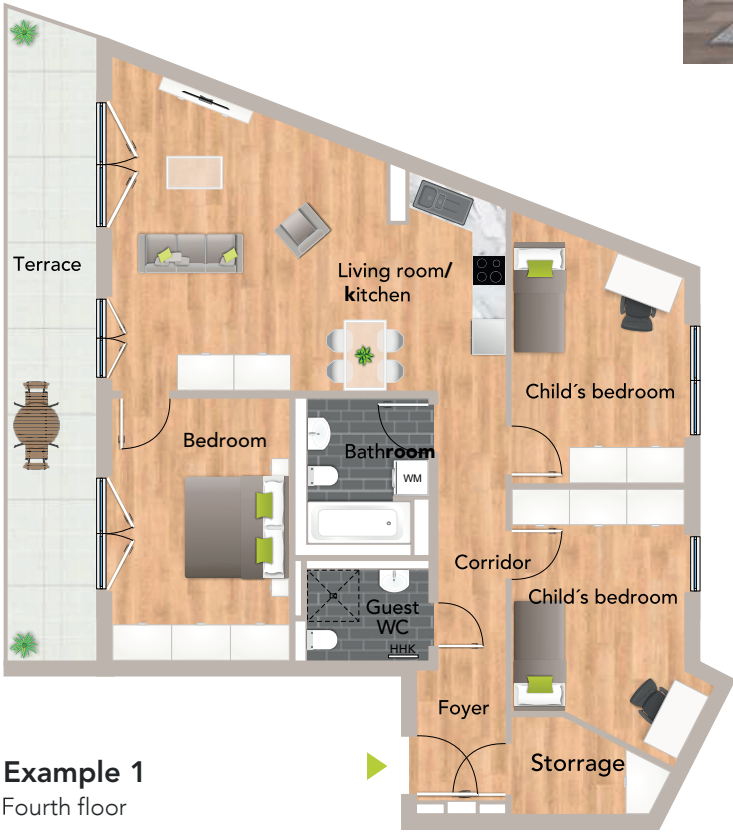


Example 3  
Second floor  
3 rooms

## Furnishing highlights

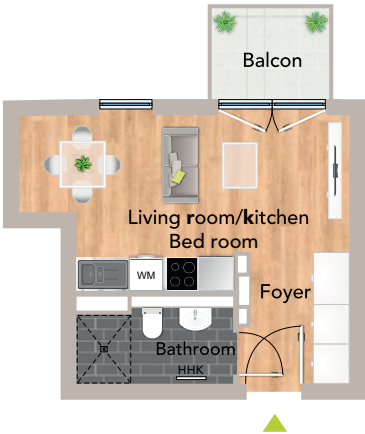
- Real wood parquet in the living rooms and bedrooms
- Underfloor heating for cosy warmth
- Classic tiles in the bathroom
- High-quality sanitary equipment
- Towel radiators and level-access showers
- Bathrooms partly with bathtub
- Windows with soundproof double glazing
- Partially accessible residential units
- Lift
- District heating

The new building impresses with its high level of living comfort.



Example 1  
Fourth floor  
4 rooms

Example 2  
First floor  
1 room



Example 4  
First floor  
2 rooms





## Our Berlin office



Berlin-Mariendorf | Kurfürstenstraße

### The Berlin branch

With the experience of 75 years of company tradition, our aim is to create long-term value through entrepreneurial action. The joy of living is one of the most important elements of our happiness. This requires more than just a roof over your head. We are committed to residential areas and neighbourhoods that invite you to live and arrive - to become home. Living environments with their own identity, which give people and nature space and encourage them to do things outdoors. When developing, we think about the future, while respecting the past and what was there before and characterises this place. Because in a lively environment, all times can be felt. Building means continuing to construct and creating a future for future residents that they can look forward to. We are represented in the economically strong regions and liaise intensively with our subsidiaries on projects.

The knowledge of our employees on site and the experience gained in other branches with similar projects provides us with exceptional expertise. Our projects are realised from our nine branches in Berlin, Hamburg, Leipzig, Düsseldorf, Cologne, Frankfurt, Stuttgart, Nuremberg and Munich or our regional offices in Hanover, Weimar, Dortmund, Koblenz, Mannheim, Freiburg and Überlingen. These branches manage local projects and are competent local contacts for customers and public institutions. We believe that we can create long-term added value for our customers, cities, communities, society and the environment with our project and area developments. As a Rabobank company, we have a financially strong background that also allows us to participate in high-quality area and project developments. At the same time, we offer cities and municipalities financial planning security with us.

### Projects with added value

BPD's Berlin office is there for you, building residential properties that local people will call home in the future. Our aim is to create long-term added value for our customers, cities, municipalities, society and the environment with BPD residential construction projects. The design of living spaces is at the heart of the company's philosophy, and the development of lovable living environments where people feel at home from the very beginning. Since 2013, projects with more than 600 residential units have been planned and realised in Berlin and Brandenburg. Current projects in the Berlin region include Britzer Strasse in Mariendorf and Cité Foch Süd in Wittenau.

### BPD is the strong partner at your side

We at the Berlin branch are your local contact. We utilise the experience of 75 years of company tradition. Our customers can trust in the reliability of our promises and the certainty of project realisation.



Berlin-Friedrichshain | Garden House

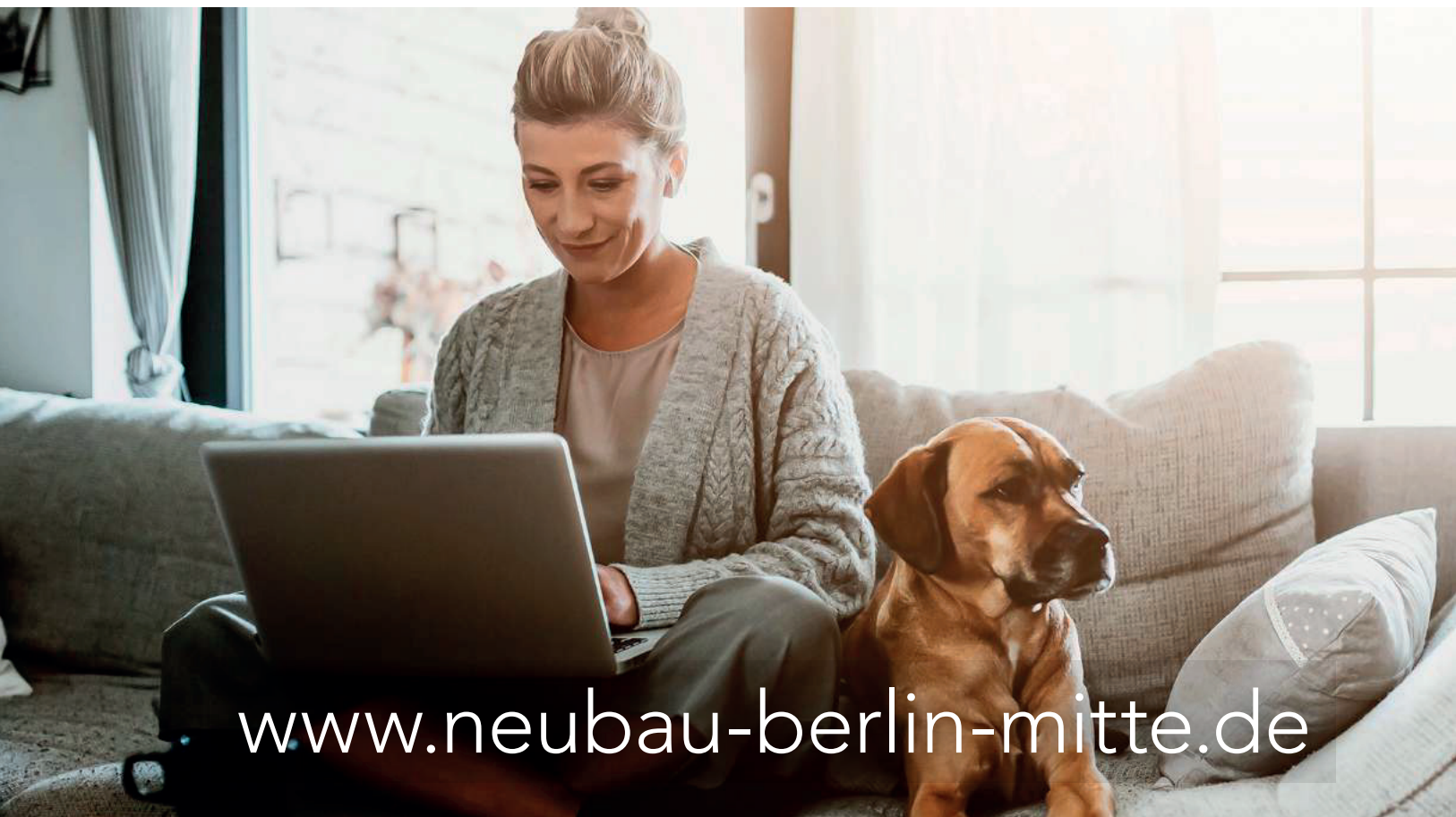


Berlin-Mariendorf | Britzer Straße



Berlin-Wittenau | fleur de Berlin – Cité Foch





[www.neubau-berlin-mitte.de](http://www.neubau-berlin-mitte.de)

All information contained in this brochure is intended to provide interested parties with general information. The images reflect the moods and do not determine the scope of services. Calculations and statements in this brochure are the result of careful planning and calculations. They are therefore subject to the proviso that the planning and calculation bases remain fundamentally unchanged and the legal situation remains the same. The scope of services is determined by the contracts concluded and not by this brochure. Although changes to the status of the plans at the time the brochure was published are not envisaged, they may occur for technical or scheduling reasons. Therefore, liability for the accuracy of the information or for the breach of any duty to provide information is limited to intent or gross negligence, to the extent permitted by law. This brochure is provided subject to this reservation.

Image rights: REUTER × BOBETH, Shutterstock. Responsible for the content: BPD Property Development GmbH

A PROJECT BY

BPD Immobilienentwicklung GmbH  
Niederlassung Berlin  
Kranzler Eck  
Kurfürstendamm 21  
10719 Berlin  
[www.bpd-de.de](http://www.bpd-de.de)